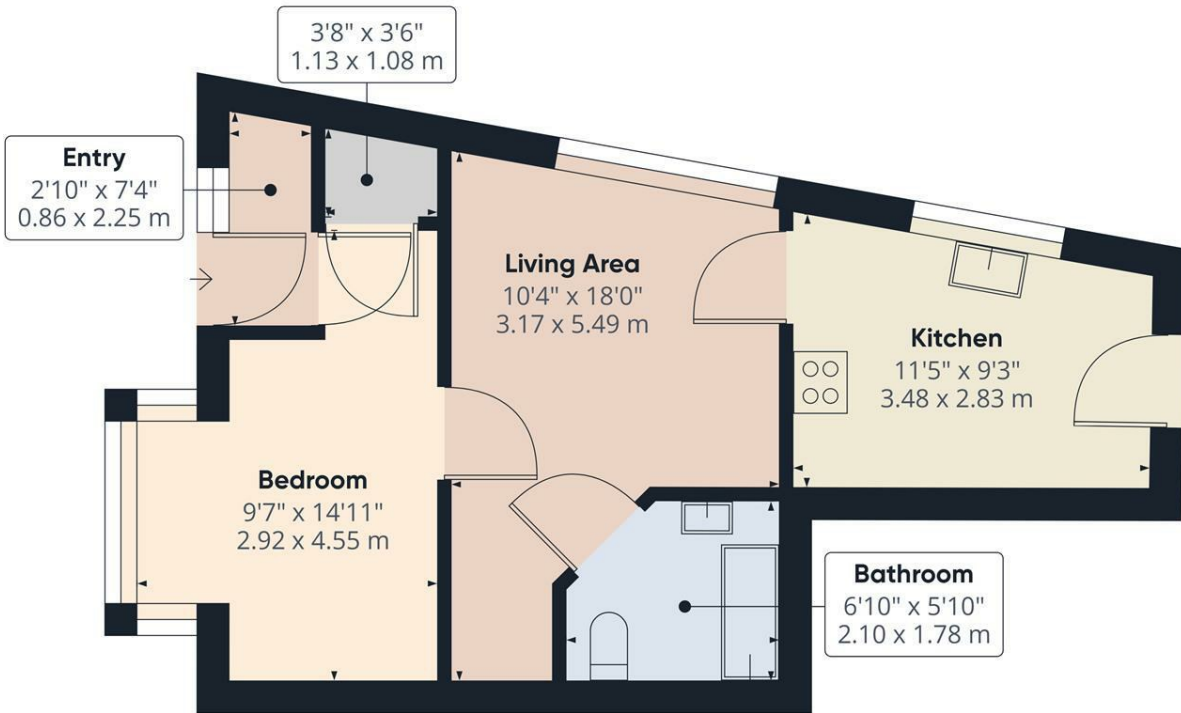




Flat 1 27 Glenalmond Road, Sheffield S11 7GW **£750 Per Calendar Month**

To let is this beautifully presented one bedroom ground floor apartment well located for all the local amenities on Ecclesall Road and convenient for the University, hospitals and city centre. Ideal for the professional couple and briefly comprising: kitchen, lounge, double bedroom and bathroom with three piece white suite and shower over. The property benefits from an allocated parking space.

FURNISHED. Restrictions: No smokers. Energy Efficiency Rating C. Council Tax Band A

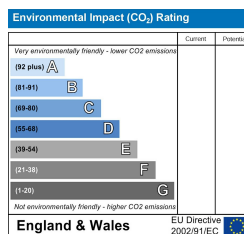
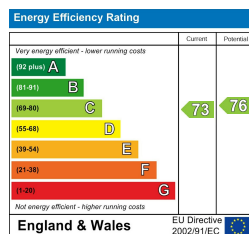


Approximate total area
431.54 ft²
40.09 m²

(1) Excluding balconies and terraces

While every attempt has been made to ensure accuracy, all measurements are approximate, not to scale. This floor plan is for illustrative purposes only.

GIRAFFE 360



Banner Cross
Hathersage
Bakewell
Matlock
www.saxtonmee.co.uk

949-951 Ecclesall Road, Sheffield S11 8TN
3 Bank View, Main Road, Hathersage S32 1BB
Matlock Street, Bakewell DE45 1EE
27 Causeway Lane, Matlock, DE4 3AR

T: 0114 268 3241
T: 01433 650009
T: 01629 815307
T: 01629 828250

E: bannercross@saxtonmee.co.uk
E: hathersage@saxtonmee.co.uk
E: bakewell@saxtonmee.co.uk
E: matlock@saxtonmee.co.uk